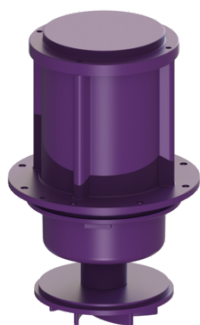


## Pump drive SPF 5500 E 400 V, S3, 5 m cable



### Article information

Item no.: 680727  
 GTIN: 4026092095508  
 Price group: 90

### Description

Pump drive with multi-vane impeller for faecal wastewater

#### Dimensions

Net weight:	38 kg
Gross weight:	40 kg
Packaging dimension:	width
Packaging dimension:	height
Packaging dimension:	length

#### Pumping device

Pump control:	SPF 5500 E
Connection type:	Direct connection
Rated current:	9,1 A
Length of mains cable for pump:	5 m
Self-diagnosis system (SDS):	I
Protection class control unit:	IP 68 (3m/48h)
Max. temperature (permanent) of conveyed material:	40 °C
Max. pumping height:	27 m
Speed:	2840 U/min
Power P1:	5,6 kW
Power P2:	4,7 kW
Type of pump connection cable:	H07RN-F 7G 1.5 mm <sup>2</sup>

#### Control

Mains frequency:	50 Hz
Operating voltage:	400 V
Connection type:	Direct connection