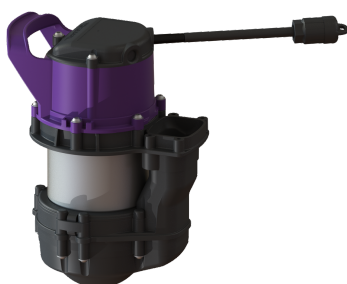


## Replacement pump GTF 600 without float switch, 5 m



### Article information

Item no.: 680977  
GTIN: 4026092095904  
Price group: 90

### Description

Replacement pump with float switch for faecal-free wastewater.

#### General characteristics

Type of wastewater: without sewage

#### Dimensions

Net weight: 6,35 kg

Gross weight: 6,35 kg

Packaging dimension: length

Packaging dimension: width

Packaging dimension: height

#### Pumping device

Pump: GTF 600

Connection type: Schuko (earthed contact) 2-pin

Operating voltage: 230 V

Mains frequency: 50 Hz

Protection class (pump): IP 68 (3m)

Max. temperature (permanent) of conveyed material: 40 °C

Max. pumping height: 8 m

Speed: 2750 U/min

Power P1: 0,65 kW

Power P2: 0,4 kW

Operating mode: S1

Type of pump connection cable: H07RN-F 3G 1.5 mm<sup>2</sup>

Impeller type: Multi-vane impeller

Type of fuse required (pump): C 16 A

Length of mains cable for pump: 10 m

Rated current: 2,9 A

#### Control

Connection type: Schuko (earthed contact) 2-pin