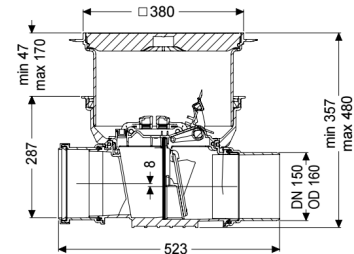


Backwater valve Staufix DN 150, Floor slab, black, Type 1



Article information

Item no.: 720150.10S
 GTIN: 4026092076095
 Price group: 10

Advantages

- Simple conversion to Staufix Type 2 or StaufixControl
- Flexible installation, various covers available for floor slab installation
- Simple, toolless maintenance and cleaning

Description

The backwater valve for wastewater without sewage is equipped with one mechanical flap which closes automatically in the event of backwater and also serves as an emergency closure to be closed by hand. Thanks to the modular KESSEL system, existing systems can easily be supplemented by a second flap or be converted to the StaufixControl backwater valve.

Variant

Emergency closure: yes
 Mechanical backwater flaps: 1

General characteristics

Colour: black
 Standard: EN 13564
 Nominal size (DN): 150
 Outer diameter (OD): 160 mm
 Type of wastewater: without sewage
 Installation situation: floor slab installation
 Delivery state: Installation-ready (connection parts must be connected on site)
 Backwater protection: Type 1

Dimensions

Net weight: 8,4 kg

Gross weight:	11 kg
Groundwater resistant from lower edge of base section:	3 mm
Cutout dimension, width:	750 mm
Cutout dimension, length:	750 mm
Vertical drop between inlet and outlet:	8 mm
Installation depth:	341 - 464 mm
Vertical adjustment:	vertically adjustable upper section
Width:	444 mm
Length:	523 mm
Packaging dimension:	width
Packaging dimension:	height
Packaging dimension:	length

Coverage features

Type of cover:	Cover plate
Cover material:	Polymer
Colour of cover:	black
Width of cover:	366 mm
Length of cover:	366 mm
Cover locking:	Lock & Lift
Load class:	L 15 (EN 1253-1)
Tightness:	surface water resistant