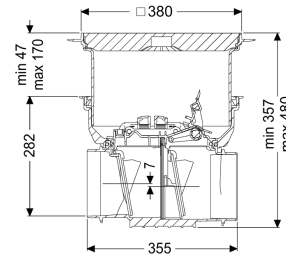


## Staufix drain body type 2 DN 125-200, Floor slab, black



### Article information

Item no.: 730000.15S  
 GTIN: 4026092076279  
 Price group: 10

### Advantages

- Easy conversion to StaufixControl
- Flexible installation
- Various covers available for floor slab installation

### Description

The Staufix drain body for faecal-free wastewater is equipped with two mechanical flaps which close automatically in the event of backwater. One flap serves at the same time as an emergency closure to be closed by hand. Spigot and socket in the required dimension are available as an option. Thanks to the modular KESSEL system, existing systems can easily be converted to the StaufixControl backwater valve.

#### Variant

Stainless steel flap as rat protection:	no
Emergency closure:	yes
Mechanical backwater flaps:	2

#### General characteristics

Colour:	black
Standard:	EN 13564
Nominal size (DN):	125-200
Note on nominal size:	Hydraulics correspond to DN 150
Installation situation:	floor slab installation
Delivery state:	Installation-ready (connection parts must be connected on site)
Backwater protection:	Type 2

#### Dimensions

Net weight:	7,6 kg
-------------	--------

Gross weight:	10,2 kg
Groundwater resistant from lower edge of base section:	3000 mm
Cutout dimension, width:	750 mm
Cutout dimension, length:	750 mm
Vertical drop between inlet and outlet:	8 mm
Installation depth:	341 - 464 mm
Type of height adjustability:	vertically adjustable upper section
Length:	444 mm
Width:	444 mm
Packaging dimension:	length
Packaging dimension:	width
Packaging dimension:	height

#### Coverage features

Type of cover:	Cover plate
Cover material:	Polymer
Colour of cover:	black
Width of cover:	368 mm
Height of cover:	43 mm
Length of cover:	368 mm
Locking:	locked
Load class:	L 15 (EN 1253-1)
Tightness:	surface water resistant