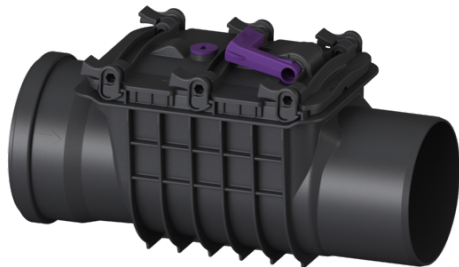


## Backwater valve Staufix Basic DN 150, Type 2 R, with emergency closure



### Article information

Item no.: 73150R  
 GTIN: 4026092028353  
 Price group: 10

### Advantages

- Optional rat protection flap for additional safety
- Fast and toolless maintenance and cleaning
- Ideal for modernisation, can also be installed in existing pipes later

### Description

The backwater valve for wastewater without sewage is equipped with two mechanical flaps which close automatically in the event of backwater. One flap serves at the same time as an emergency closure to be closed by hand.

#### Variant

Stainless steel flap as rat protection:	yes
Emergency closure:	yes
Mechanical backwater flaps:	2

#### General characteristics

Colour:	black
Standard:	EN 13564
Nominal size (DN):	150
Outer diameter (OD):	160 mm
Type of wastewater:	without sewage
Installation situation:	exposed drainage pipe
Delivery state:	installation-ready
Backwater protection:	Type 2

#### Dimensions

Net weight:	2,8 kg
Gross weight:	2,8 kg
Vertical drop between inlet and outlet:	9 mm
Length:	450 mm
Width:	200 mm
Height:	280 mm
Packaging dimension:	length
Packaging dimension:	width
Packaging dimension:	height

Coverage features  
Cover locking:

Quick-release closure