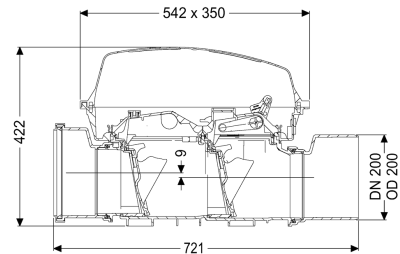
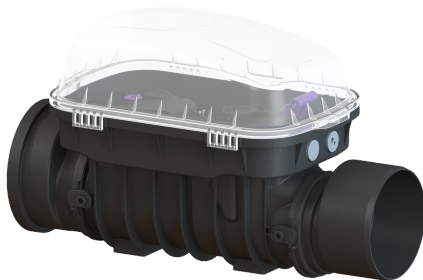


## Backwater valve Staufix SWA DN 200, exposed



### Article information

Item no.: 73200.10  
 GTIN: 4026092046715  
 Price group: 30

### Advantages

- Simple conversion to Staufix FKA or Pumpfix F
- Fast, simple and toolless maintenance
- Available as a complete set or module set

### Description

The premium backwater valve for wastewater without sewage is equipped with two mechanical flaps which close automatically in the event of backwater. One flap serves at the same time as an emergency closure to be closed by hand. Thanks to the modular KESSEL system, existing systems can easily be converted to a Staufix FKA premium backwater valve or a Pumpfix F backwater pumping station.

#### Variant

Emergency closure:	yes
Mechanical backwater flaps:	2

#### General characteristics

Colour:	black
Standard:	EN 13564
Nominal size (DN):	200
Outer diameter (OD):	200 mm
Note on nominal size:	Hydraulics correspond to DN 150
Type of wastewater:	without sewage
Installation situation:	exposed drainage pipe
Delivery state:	installation-ready
Backwater protection:	Type 2

#### Dimensions

Net weight:	8 kg
Gross weight:	13,5 kg
Vertical drop between inlet and outlet:	9 mm

Length:	720 mm
Width:	350 mm
Height:	422 mm
Packaging dimension:	length
Packaging dimension:	width
Packaging dimension:	height

Tank/drain body	
Socket version:	including spigot and socket

#### Coverage features

Type of cover:	Protective cover
Cover material:	Polymer
Colour of cover:	transparent
Width of cover:	350 mm
Height of cover:	165 mm
Length of cover:	542 mm
Locking:	Clip closure