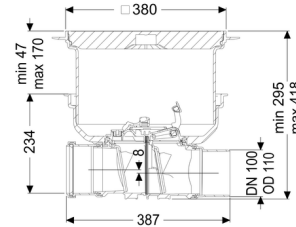


Backwater valve StaufixControl DN 100, Floor slab, tileable, Type 2 R



Article information

Item no.: 770100.10XR
 GTIN: 4026092076675
 Price group: 10

Advantages

- optical and acoustic warning message if backwater occurs
- Wireless backwater signal (EnOcean) can be integrated in the control system
- Flexible installation, various covers available for floor slab installation

Description

The backwater valve for wastewater without sewage is equipped with two mechanical flaps which close automatically in the event of backwater. One flap serves at the same time as an emergency closure to be closed by hand.

The battery-operated warning unit in the lockable cover generates an optical and acoustic warning if backwater occurs. Optionally, the warning message can control a remote signal generator in the living area via the EnOcean protocol or automatically disconnect a switched socket from the mains.

Type of wastewater: wastewater without sewage
 Installation situation: floor slab installation

Version:

Stainless steel flap as rat protection: yes
 Type of waterproofing layer: Waterproofing layer
 Emergency closure: yes

Delivery state: Installation-ready (connection parts must be connected on site)

Backwater protection: Type 2
 Number of mechanical backwater flaps: 2

General characteristics:

Nominal size (DN):	100
Outer diameter (OD):	110
Colour:	black
Standard:	EN 13564

Dimensions:

Length:	444 mm
Width:	444 mm
Cutout dimension, length:	750 mm
Cutout dimension, width:	750 mm

Tank:

Installation depth:	287 - 410 mm
Groundwater resistant from lower edge of base section:	3.000 mm
Vertical adjustment:	vertically adjustable upper section

Coverage features:

Type of cover:	tileable cover plate
Cover material:	Polymer
Max. flooring height:	16 mm
Load class:	K 3 (EN 1253-1)
Length:	366 mm
Width:	366 mm
Tightness:	surface water resistant
Locking:	Lock & Lift
Vertical drop between inlet and outlet:	8 mm

Control:

Type of level measurement:	pneumatic
Level measurement instrument:	Pressure switch