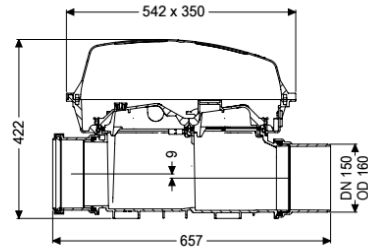
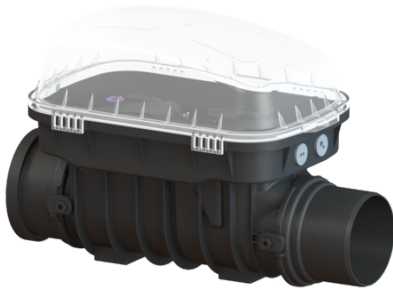


Controlfix clean out DN 150, exposed



Article information

Item no.: 80150
 GTIN: 4026092002704
 Price group: 30

Advantages

- Simple conversion to Staufix SWA
- Fast, simple and toolless maintenance
- Quick and toolless access for cleaning

Description

The Premium clean out for faecal and faecal-free wastewater makes easy access to wastewater pipes possible for inspection and maintenance work. Thanks to the modular KESSEL system, existing systems can easily be converted to a Staufix SWA Premium backwater valve, Staufix FKA or Pumpfix F backwater pumping station.

General characteristics

Colour:	black
Nominal size (DN):	150
Outer diameter (OD):	160 mm
Type of wastewater:	for wastewater with and without sewage
Installation situation:	exposed drainage pipe
Delivery state:	installation-ready

Dimensions

Net weight:	6 kg
Gross weight:	9,19 kg
Vertical drop between inlet and outlet:	9 mm
Length:	486 mm
Width:	350 mm
Height:	422 mm
Packaging dimension:	length
Packaging dimension:	width
Packaging dimension:	height

Tank/drain body

Socket version:	including spigot and socket
Coverage features	
Type of cover:	Protective cover
Cover material:	Polymer
Colour of cover:	transparent
Width of cover:	350 mm
Height of cover:	165 mm
Length of cover:	542 mm
Locking:	Clip closure