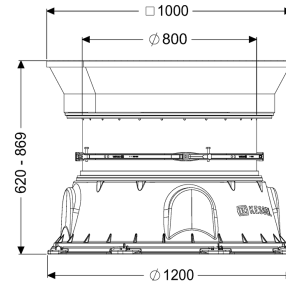
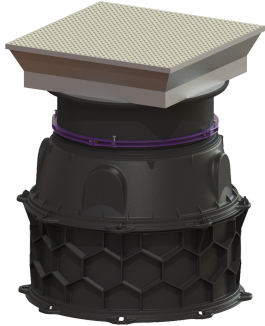


## Chamber module LW 1000 floor slab Access LW 800, 620-869 mm, Class B



### Article information

Item no.: 8740141  
GTIN: 4026092070079  
Price group: 60

### Advantages

- For modular assembly with simple connection segments and intermediate sections 250 and 500 mm high
- Innovative honeycomb structure
- Installation in groundwater up to 3000 mm

### Description

The chamber module for wet or dry installation is equipped with fitted access steps in accordance with DIN EN 13101 and BGR 177, all the necessary seals and connecting wedges as well as a taper with vertically adjustable upper section. The intermediate sections made of permanently resistant polymer (PE) have universal connection possibilities. Thanks to the modular KESSEL system, the design can be flexibly combined with intermediate sections, taper, upper section and cover.

#### General characteristics

|                         |   |
|-------------------------|---|
| Colour:                 | black   |
| Material:               | PE-HD   |
| Standard:               | EN 13598-2  |
| Installation situation: | underground installation  |
| Delivery state:         | Partly for on-site assembly (access steps have been pre-mounted in the factory) |
| Approval:               | Z-42.1-527  |

#### Dimensions

|  |         |
|--|---------|
| Net weight:  | 200 kg  |
| Gross weight:  | 215 kg  |
| Groundwater resistant from lower edge of base section: | 3000 mm |

|                               |                                     |
|-------------------------------|-------------------------------------|
| Installation depth:           | 620 - 869 mm                        |
| Type of height adjustability: | vertically adjustable upper section |
| Length:                       | 1200 mm                             |
| Width:                        | 1200 mm                             |
| Packaging dimension:          | length                              |
| Packaging dimension:          | width                               |
| Packaging dimension:          | height                              |
| Tank/drain body               |                                     |
| Inlet max. scoring (DN):      | 150 mm                              |
| Clear width of tank (LW):     | 1000 mm                             |
| Clear width of entry (LW):    | 800 mm                              |
| Coverage features             |                                     |
| Type of cover:                | Rectangular cover plate             |
| Cover material:               | Stainless steel                     |
| Width of cover:               | 1005 mm                             |
| Height of cover:              | 245 mm                              |
| Length of cover:              | 1096 mm                             |
| Surface:                      | anti-slip                           |
| Locking:                      | locked                              |
| Load class:                   | B 125 (EN 124)                      |
| Tightness:                    | surface water resistant             |