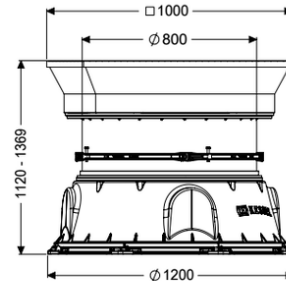
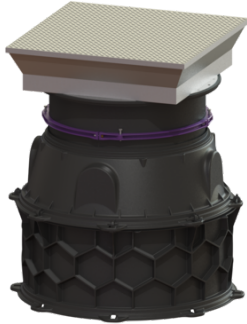


Chamber module LW 1000 floor slab Access LW 800, 1120-1369 mm, Class D



Article information

Item no.: 8740160
 GTIN: 4026092070260
 Price group: 60

Advantages

- For modular assembly with simple connection segments and intermediate sections 250 and 500 mm high
- Innovative honeycomb structure
- Installation in groundwater up to 3000 mm

Description

The chamber module for wet or dry installation is equipped with fitted access steps in accordance with DIN EN 13101 and BGR 177, all the necessary seals and connecting wedges as well as a taper with vertically adjustable upper section. The intermediate sections made of permanently resistant polymer (PE) have universal connection possibilities. Thanks to the modular KESSEL system, the design can be flexibly combined with intermediate sections, taper, upper section and cover.

General characteristics

Colour:	black
Material:	PE-HD
Standard:	EN 13598-2
Installation situation:	underground installation
Delivery state:	Partly for on-site assembly (access steps have been pre-mounted in the factory)
Inlet max. scoring (DN):	Z-42.1-527

Dimensions

Net weight:	198,05 kg
Gross weight:	218,11 kg
Groundwater resistant from lower edge of base section:	3000 mm

Installation depth:	1120 - 1369 mm
Vertical adjustment:	vertically adjustable upper section
Width:	1200 mm
Length:	1200 mm
Packaging dimension:	width
Packaging dimension:	height
Packaging dimension:	length

Tank/drain body	
Number of inlets:	150 mm
Clear width of tank (LW):	1000 mm
Clear width of entry (LW):	800 mm

Coverage features	
Type of cover:	Rectangular cover plate
Cover material:	Stainless steel
Width of cover:	1005 mm
Height of cover:	245 mm
Length of cover:	1096 mm
Surface:	anti-slip
Cover locking:	locked
Load class:	D 400 (EN 124)
Tightness:	surface water resistant