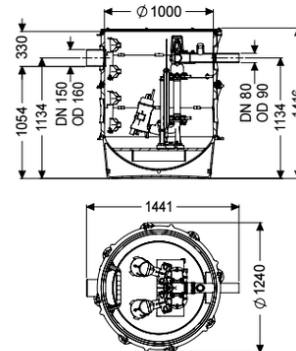


Pumping station Aquapump XL Duo, GTF 1400-S1



Article information

Item no.: 8743034
GTIN: 4026092078990
Price group: 60

Advantages

- Maximum safety
- Flexible installation
- Also handles large quantities of wastewater

Description

The pumping station without sewage wastewater is equipped with one or two submersible pumps and a backflow preventer. The collection tank made of permanently resistant polymer (PE) has an open pump tank with universal connection options. Quick-release closures enable the integrated components to be removed easily. The KESSEL modular system provides different engineering chamber options as accessories for the further layout. Stainless steel pump removal chains available as accessory for each installation depth - Article number:

680528 = Length 2 m 680529 = Length 3 m
680530 = Length 4 m 680531 = Length 5 m

Variant

Type of system:

Shut-off valve:

Passage seal for conduit pipe (DN):

Access steps:

Passage seal for ventilation pipe (DN):

Installation:

Rim width:

Backwater protection:

Pressure pipe connection:

duo pump

Shut-off valve made of polymer

100

yes

100

Wet installation

Control unit

integrated

horizontal

General characteristics

| | |
|---------------------|--|
| Colour: | black |
| Standard: | EN 12050-2 as well as EN 12050-1 (without ATEX requirements) |
| Type of wastewater: | for wastewater with or without sewage (in installation situations without ATEX requirements) |
| Delivery state: | Pre-mounted for final assembly on site (pumps and sensor system must be fitted on site and control unit must be connected) |
| System type: | Duo |

Dimensions

| | |
|--|---------|
| Net weight: | 193 kg |
| Gross weight: | 217 kg |
| Groundwater resistant from lower edge of base section: | 3000 mm |
| Width: | 1300 mm |
| Height: | 1416 mm |
| Length: | 1300 mm |
| Packaging dimension: | width |
| Packaging dimension: | height |
| Packaging dimension: | length |

Tank/drain body

| | |
|--------------------------------|---------|
| Pressure pipe connection (DN): | 80 |
| Pressure pipe connection (OD): | 90 mm |
| Inlet nominal size (DN): | 160 mm |
| Inlet nominal size (DN): | 150 |
| Inlet type: | 1 |
| Clear width of tank (LW): | 1000 mm |
| Pumping volume: | 340 l |

Pumping device

| | |
|--|----------------------|
| Pump control: | GTF 1400 |
| Number of pumps: | 2 |
| Weight: | 22 kg |
| Connection type: | Direct connection |
| Rated current: | 6,5 A |
| Length of mains cable for pump: | 10 m |
| Self-diagnosis system (SDS): | I |
| Insulation class: | H |
| Cos phi - power factor: | 0,99 |
| Protection class control unit: | IP 68 (20m) |
| DSC: | integrated |
| Max. temperature (permanent) of conveyed material: | 40 °C |
| Max. pumping capacity: | 31 m ³ /h |
| Max. pumping height: | 10,5 m |
| Speed: | 2900 U/min |
| Power P1: | 1,5 kW |

| | |
|---------------------------------------|--------------------------------|
| Power P2: | 1,1 kW |
| Operating mode: | S1 |
| Type of pump connection cable: | H07RN-F 3G 1.5 mm ² |
| Impeller type: | Multi-vane impeller |
| Control | |
| Motor protection switch: | yes |
| Alarm sensor: | Level sensor |
| Level measurement instrument: | Level sensor |
| Type of level measurement: | hydrostatic |
| Protection class probe: | IP 54 |
| Mains frequency: | 50 Hz |
| Operating voltage: | 230 V |
| Connection type: | Direct connection |
| Potential-free contact: | optional |
| GSM interface: | yes |
| USB interface: | yes |
| Log book function: | yes |
| Multi-line display: | yes |
| Battery buffering: | yes |
| Self-diagnosis system (SDS): | yes |
| Max. permissible switching frequency: | Comfort |
| Control unit function: | With alarm message |
| Warning equipment version: | acoustic and optical signal |