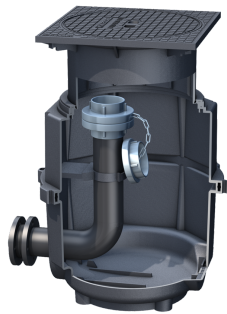


Direct disposal LW 400, Disposal connection, right



Article information

Item no.: 917420.00
GTIN: 4026092055540
Price group: 60

Description

Direct disposal with disposal connection on the right, suitable for grease separator. Equipped in the factory for underground grease separators with direct disposal connection including disposal chamber LW 400

- with flange joint DN 65, PN 10 (welding neck and flange) for suction pipe on site
- with Storz B coupling R 2 1/2" for disposal vehicle
- with chamber system LW 400 incl. sealed class A/B/D cover, installation depth 630 mm to 980 mm
- for nominal size NS 1 - NS 20
- without grease separator

Delivery:

Installed suction device for joint disposal from sludge trap and separator chamber. Tank and direct connection completely assembled, disposal pipe and Storz B connection on site.

Dimensions

Net weight:	50 kg
Gross weight:	50 kg
Clear width (LW):	400 mm
Packaging dimension:	length
Packaging dimension:	width
Packaging dimension:	height