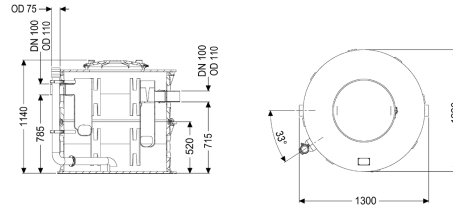


## Grease separat. EasyClean Modular free, NS 2, Direct, 3-part, TS



### Article information

Item no.: 93002-D1-R2-TS

GTIN: 4026092104033

Price group: 60

### Advantages

- Ideal where access is tight
- can be divided into 3 parts for insertion, for an insertion opening of max. 66 cm
- Direct disposal with the tank closed

### Description

The separator for greasy wastewater is suitable for free-standing set-up in frost-protected rooms and comes without metallic components in the tank. Thanks to the modular design, the separator can be inserted even where access is extremely tight. The collecting tank made of permanently resistant polymer (PE) is equipped with an integrated sludge trap. A service access cover with odour-tight cover and quick-release closures makes easy access possible for cleaning and maintenance work. A direct disposal pipe socket is available for odour-reduced manual disposal. 20 year polyethylene warranty.

#### Variant

Chamber system:	three-piece chamber
Disposal variant:	Direct
Shredder-Mix-System:	no
Inspection window:	no
Nominal size (NS):	2
SonicControl:	no
Disposal system:	Disposal connection
Refill inlet in accordance with DIN 1988:	no
Type of disposal:	manual

#### General characteristics

Material:	PE
Standard:	EN 1825
Installation situation:	free-standing installation

Delivery state:	Installation-ready (connection parts must be connected on site)
Dimensions	
Net weight:	95 kg
Gross weight:	113 kg
Height tank bottom up to centre section:	550 mm
Required access area, length:	1240 mm
Required access area, width:	1133 mm
Required access area, height:	580 mm
Packaging dimension:	length
Packaging dimension:	width
Packaging dimension:	height
Tank/drain body	
Distance pipe bottom outlet to tank bottom:	715 mm
Distance pipe bottom inlet to tank bottom:	785 mm
Outlet nominal size (OD):	110 mm
Outlet nominal size (DN):	100 mm
Inlet nominal size (OD):	110 mm
Inlet nominal size (DN):	100 mm
Connection inlet/outlet sockets:	PE-HD pipes in accordance with DIN 19537, HT pipes in accordance with DIN 19560, PP or AS
Coverage features	
Type of cover:	Cover
Cover material:	Polymer
Colour of cover:	black
Locking:	Quick-release closure
Tightness:	odour-tight
Wastewater contents	
Separator contents:	380 l
Contents of sludge trap:	200 l
Storage quantity of grease:	80 l
Control	
Control unit:	no