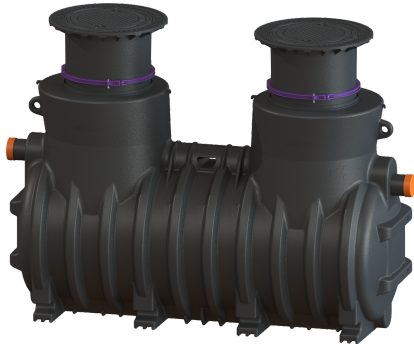


Grease separator EasyClean ground NS 10, Standard, 740-1175 mm, Class A/B



Article information

Item no.: 93010/120B
 GTIN: 4026092025796
 Price group: 60

Advantages

- Vertically adjustable upper section with odour-tight cover plates in various load classes
- Waterproof, resistant to aggressive wastewater
- Low-maintenance operation

Description

The separator for greasy wastewater is suitable for installation in the ground and comes without metallic components in the tank. The collecting tank made of permanently resistant polymer (PE) is equipped with an integrated sludge trap and has a rounded base for fast and clean disposal. Access for cleaning and maintenance work is possible via one or several service access covers. Manual disposal is carried out with the tank open. 20 year polyethylene warranty.

Variant

Note on installation depth:	Installation in the ground, frost-free depth 1200 mm
Chamber system:	Cistern
Disposal variant:	Standard
Shredder-Mix-System:	no
Inspection window:	no
Nominal size (NS):	10
SonicControl:	no
Refill inlet in accordance with DIN 1988:	no
Type of disposal:	manual with suction hose
Load-bearing capacity (DIN 19901):	E2

General characteristics

Material:	PE
Standard:	EN 1825
Installation situation:	underground installation
Delivery state:	Installation-ready (connection parts must be connected on site)

Dimensions

Net weight:	330 kg
-------------	--------

Gross weight:	345 kg
Groundwater resistant from lower edge of base section:	1320 mm
Diameter:	648 mm
DSC:	700 - 1.800
T-DSC:	220
Max. length:	3062 mm
Installation depth:	740 - 1175 mm
Type of height adjustability:	vertically adjustable upper section, can be tilted by 5 degrees
Required access area, length:	2910 mm
Required access area, width:	1200 mm
Packaging dimension:	length
Packaging dimension:	width
Packaging dimension:	height
Tank/drain body	
Distance pipe bottom outlet to tank bottom:	1030 mm
Distance pipe bottom inlet to tank bottom:	1100 mm
Outlet nominal size (OD):	160 mm
Outlet nominal size (DN):	150
Inlet nominal size (OD):	160 mm
Inlet nominal size (DN):	150
Connection inlet/outlet sockets:	PE-HD pipes in accordance with DIN 19537, PVC-KG pipes in accordance with DIN 19534, PP or AS
Clear width of entry (LW):	600 mm
Coverage features	
Type of cover:	Cover plate
Cover material:	Grey iron
Colour of cover:	black
Height of cover:	95 mm
Locking:	unlocked
Load class:	B 125 (EN 124)
Tightness:	odour-tight and surface water resistant
Wastewater contents	
Separator contents:	1600 l
Total volume:	2600 l
Contents of sludge trap:	1000 l
Storage quantity of grease:	400 l
Control	
Control unit:	no